

# UNFS UPDATE



Upper North Farming Systems Newsletter

May 2015

## 2015 UNFS Trials and Demonstrations in the Ground

*Ruth Sommerville*

Six Post Pasture Seeding Demonstration sites have been established in the last month across the Upper North. Funded by the National Landcare Programmes 25th Anniversary of Landcare Grants, this project aims to compare cultivating versus non-cultivating a paddock after a pasture phase on plant establishment and yield of the following season crop. The demonstrations include Barley, Wheat and Bean crops and will be available for members to inspect throughout the season. The final outcomes of these comparisons will be written up as case studies to support the stubble management guidelines produced under the GRDC Stubble Initiative.

UNFS has been successful in gaining a trial site under the Overdependence on Agrochemicals Project, funded by the GRDC. This trial is looking at the control of Barley Grass using crop competition and other management practices. It has been sown on the west of the range where high levels of herbicide resistance in barley grass has been observed.

GRDC has granted an extension to the Crop Sequencing Trial north of Appila. This project was due to have its final season in 2014, but due to prudent management of the funds by the project managers at SARDI, the project will be extended for another year. This site will be particularly interesting to visit in the spring to assess for effects of crop rotation on rye grass populations.

Ten Yield Prophet sites have once again been established throughout the district, made possible by sponsorship from Emerald Grain. The first reports from these sites will be sent out via email in the coming weeks by Barry Mudge to assist you with important decisions about in-season inputs and yield forecasting.

The summer fallow grazing demonstration, funded through the GRDC Stubble Initiative, has also been completed for this season and now sown to crop for another year. This site will be one of a number of case studies discussed at a workshop planned later in the year looking at sheep nutrition.

A number of other trials will be established towards the end of this years cropping season looking at the effect of harvest practices and summer stubble management on the following seasons crop establishment and soil health. We will let you know as these get underway.



### In This Issue

- Production Zoning Workshops
- Quad Bike Safety Research
- Canada vs Australia - Grain Export to China cost comparison
- Campground Host Training
- Spray Tips for coverage in retained stubbles
- Carbon Farming Business Awareness Sessions
- Vegetation Monitoring Training
- Outcomes of the Transport Survey
- Nuffield Scholarships now Open
- Soil Moisture and Yield Models from AEGIC
- Calendar of Events



# Upper North Farming Systems Production Zoning Workshops

## SPEAKERS

Michael Wells

Precision Cropping Technologies

John Squires and Claire Gutsche

Rural Directions Pty Ltd

## DETAILS

12 June 2015, 9am – 12pm

Joe and Jess Koch's farm,

Booleroo Centre

12 June 2015, 1.30pm – 4.30pm

Robert & Michelle Dennis' farm,

Port Germein

With the increasing costs of cropping and highly variable rainfall in parts of the Upper North it is increasingly important that land use is appropriately matched to land type and condition.

The Upper North Farming System is holding two on-farm workshops to demonstrate the tools that are available to assist producers to analyse their production zones. This includes the use of satellite imagery and yield data. The half day workshops will show producers how these tools can be used to develop and implement appropriate land management systems.

By attending this workshop you will:

- Be introduced to satellite imagery and how it can be used for production zoning
- Analyse the production zone maps of nearby paddocks
- Discuss implications associated with the production zones and enterprise choice
- Assess the impact production zoning can have on your gross margins

Each three hour workshop will include a couple of hours for group discussion with the speakers and then a visit to the property demonstration site.

This workshop is part of the Pasture and Production Zoning project, funded by the Northern and Yorke NRM Board and the Commonwealth Government.

For more information or to RSVP please contact Claire at Rural Directions Pty Ltd

on 8841 4500 or email [cgutsche@ruraldirections.com](mailto:cgutsche@ruraldirections.com)



**Government of South Australia**

Northern and Yorke Natural  
Resources Management Board

## New report provides cost comparison of moving grain from Canada and Australia to Asia

MONDAY 11 MAY 2015

The efficiency of Australia's bulk export grain supply chain has been pitted against that of one of our most important competitors, Canada, in a new report by the Australian Export Grains Innovation Centre (AEGIC).

Titled "***The puck stops here! - Canada challenges Australia's grain supply chains***" the report compares and contrasts Australia's supply chain with that of Canada's and outlines opportunities for increasing the efficiency of Australia's grain freight system.

"As international requirements for grain shifts and climatic and financial pressures increase, understanding operating environment of our competitors is vital," AEGIC Chief Executive Office David Fienberg said.

"Canada in particular is becoming increasingly more competitive, challenging Australia's key Asian export grain markets."

In Canada, higher volumes of grain are stored on-farm for longer and the system operates on a just-in-time basis with grain moved to port when a sale is secured. Conversely in Australia, the majority of grain is moved from farm to warehouse immediately after harvest.

Mr Fienberg said during the past 15 years Canada's grain supply chain had undergone substantial renewal and reform, more than doubling the number of high-throughput receival sites located on high capacity, highly efficient rail lines.

"The majority of Canadian grain is now delivered through this infrastructure which has reduced the time taken to deliver grain to port by one third.

"Canadian supply chains still operate at a higher cost than Australian supply chains, but with higher yields, Canada can deliver grain into Asia at almost the same cost as Australia."

"This is despite the long distance grain must travel from the inland Canadian growing areas to port, and then the long distance from Canadian ports to Asian markets," Mr Fienberg said.

The report makes recommendations as to how Australian enhance its competitive position in global grain exports.

"Grain is Australia's most valuable agricultural export and it is vital the sector examines the competitive pressures coming from other grain-producing nations," Mr Fienberg said.

"The ultimate aim is to enhance the international competitiveness and value of Australia's export grain and to return pre-farm gate value to grain growers."

View "***The puck stops here! - Canada challenges Australia's grain supply chains***" report and **summary factsheet** [here](#)

## Do you use a quad bike on your farm?

In recent years the number of deaths and injuries associated with the use of quad bike in the agriculture industry has increased.

The University of Adelaide Centre for Automotive Safety Research is conducting a research project into the use of quad bikes in SA.

They are looking for farmers to interview on their experiences riding a quad bike. They are willing to come to you at a convenient time and location for you.

If you would like to participate or more information please contact:

<http://casr.adelaide.edu.au>

1800 043 678

[casr@adelaide.edu.au](mailto:casr@adelaide.edu.au)

CENTRE FOR  
AUTOMOTIVE  
SAFETY RESEARCH



THE UNIVERSITY  
of ADELAIDE



for those curious about campground hosting  
join us and veteran campground hosts for our

## volunteer campground host induction and training weekend June 19 – 21 2015

mambray creek campground  
mount remarkable national park

all welcome

bookings essential  
and close 10 June

Don't miss out!

Department of Environment, Water and Natural Resources

campground hosts have a sense of  
adventure and enjoy sharing their love of the  
outdoors with like minded people.

- beautiful walking trails
- two nights camping
- campfires
- bbq

for information or bookings contact  
Lynn Newman

Volunteer Programs Coordinator  
Regional Coordination Branch

08 8124 4841

lynn.newman@sa.gov.au

John White Photos



WeedSmart @WeedSmartAU · Apr 10

Combine herbicide rotation with other weed  
management tools [buff.ly/1GJTWRR](http://buff.ly/1GJTWRR) via  
[@peterdnewman](https://twitter.com/peterdnewman) #agchatoz

Rotating herbicides is like wearing a  
seatbelt.

It reduces risk.

[www.ahri.uwa.edu.au](http://www.ahri.uwa.edu.au)

# Groundcover TV; Spray Tips For Better Coverage



<https://www.youtube.com/watch?v=UskthCWjeug&feature=youtu.be&list=PL2PndQdkNRHEVklSYMSV1OnyehyGG0Kf5>

Efficient herbicide application in retained stubbles is a focus of our Stubble Initiative project. Would you like to see a workshop like this in our area or is a copy of the book discussed in this podcast going to suit you better? Help us to tailor the delivery of these topics to you, drop a line to; [unfs@outlook.com](mailto:unfs@outlook.com)



**The business case for carbon farming:  
improving your farm's sustainability**

## Looking to increase your business skills and knowledge?

Kondinin Group's FREE one-day carbon farming business awareness workshops are starting this June! Held in regional towns in Western Australia, South Australia, Victoria and New South Wales, the workshops focus on how to build a business case for carbon farming under the Emissions Reduction Fund. On Monday the 22nd of June this workshop will be held in Kadina.

### Who should attend?

- Farmers
- Landowners
- Agronomists
- Professional advisers to agricultural businesses

### To register or more information, please contact:

T: 1800 677 761

F: (08) 6263 9177

E: [register@kondinin.com.au](mailto:register@kondinin.com.au)



**KONDININ  
GROUP**

This project is supported by funding  
from the Australian Government

---

# Vegetation Monitoring Training

## *Free for Volunteers & Landholders in the Northern & Yorke Region*

Would you like to learn monitoring techniques for a revegetation or restoration project you or your group are starting/working on?

Vegetation monitoring allows land/project managers to measure progress in conserving native vegetation and evaluate their efforts. It can be used for both remnant (remaining) vegetation management and revegetation projects.

This workshop will teach you techniques used in Rapid Assessment & Bushland Condition Monitoring (developed by NCSSA).

Learning Outcomes:

- Photo-point methodology
- Determining vegetation cover & structure
- Growth & success monitoring
- Recruitment
- Restoration success.

Delivered by Anne Brown from Greening Australia.

**The training is 1 day (5 hours, includes breaks) with a maximum of 10 participants.** *Participants will be sent more information & pre-reading prior to workshop.*

**Workshops will be held at:**

- **Tuesday 19<sup>th</sup> May – Mulbura Park, Mulburra Park Road, approx. 6 km NNW of Port Vincent**
- **Wednesday 20<sup>th</sup> May – Neagles Rock Reserve, Clare**
- **Thursday 21<sup>st</sup> May – King Tree Paddock, Wirrabara Forest**

To register your interest contact the Natural Resources Centre via [dewnr.nrny@sa.gov.au](mailto:dewnr.nrny@sa.gov.au) or [8841 3400](tel:88413400) with your name, email, postal address and preferred workshop location..



Natural Resources  
Northern & Yorke



Government  
of South Australia



# Grain Transport Issues Flagged for Review

Excerpt from GPSA April Newsletter

Results of the Change@SA transport survey were released last month. The State Government, through PIRSA and DPTI, worked with PPSA to survey growers on transport issues they experience in daily farming. GPSA has analysed what is in it for the grains industry.

A number of issues identified from the 680 respondents (67% primary producers), will be tackled by the 30th of June 2015, including;

- Extending the maximum permitted length of a road train prime mover when operating as a semitrailer from 19 to 20 meters.
- Amending the existing SA tri-axle dolly policy to be nationally consistent.
- Approval for high mass limit (HML) heavy vehicles to access a number of Viterra Grain sites.
- Upgrading the road access on Carslake Road, Dublin, from general mass limit to HML.
- Increasing the travel radius that a primary producer must carry and fill out a heavy vehicle fatigue work diary from 100kms to 160km.
- Establish a common registration date to make it easier for farmers to register multiple farm vehicles.

A full review can be found in their Online Newsletter: <http://grainproducerssa.rvrapid.com/?i=GPSA%20Newsletter%20April%202015#folio=2>



**NUFFIELD AUSTRALIA FARMING SCHOLARS**

**2016 SCHOLARSHIPS FOR AUSTRALIAN PRIMARY PRODUCERS**

**\$30,000 SCHOLARSHIPS**  
Applications close June 30, 2015  
Tenure is 16 weeks over two years with flexibility provided

Andrew Baldock, SA

Tania Chapman, Vic

Adam McVeigh, QLD

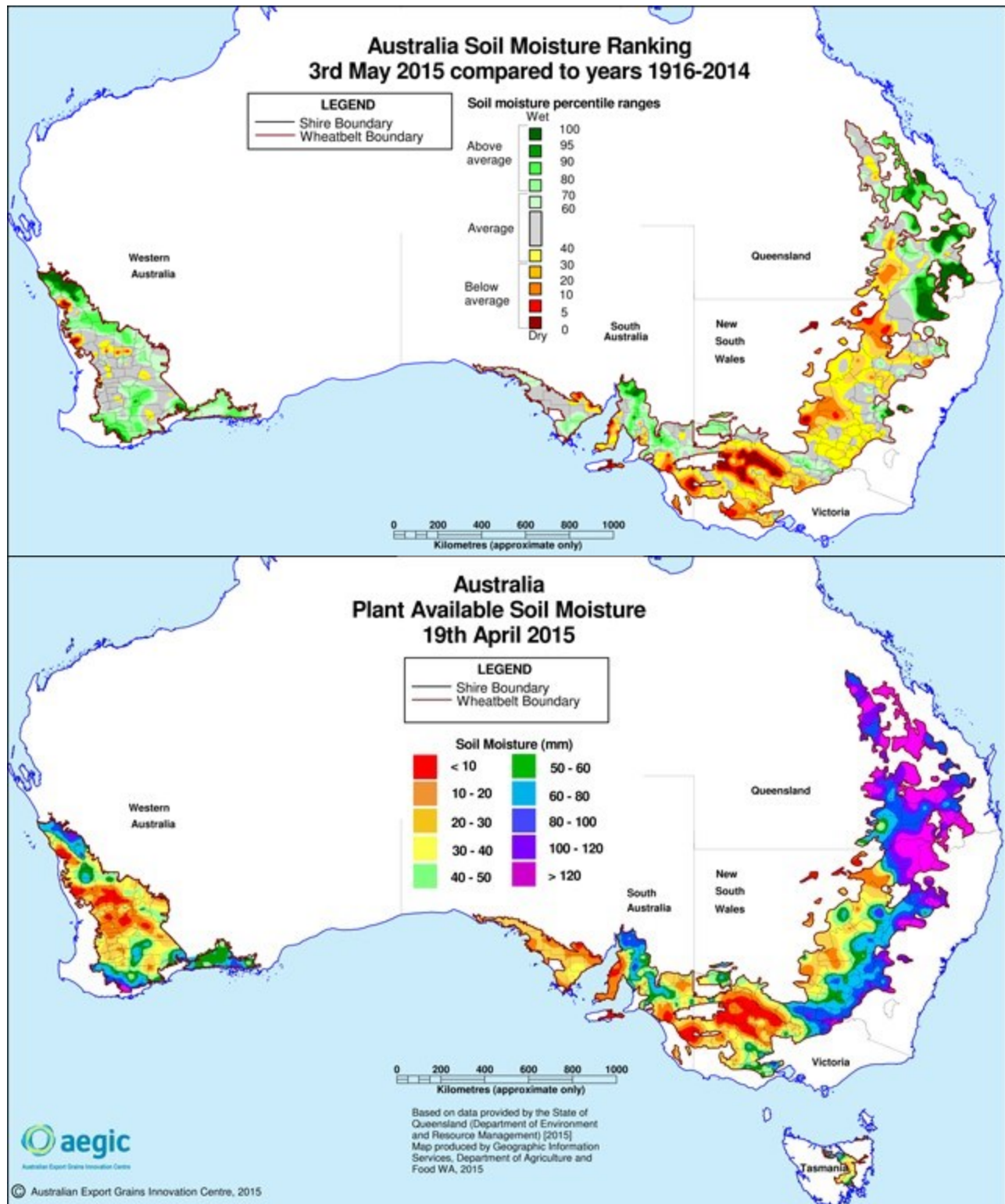
Fiona Hall, NSW

# 2015 Soil Moisture Maps and Yield Predictions

*Excerpt from AEGIC In The Loop, 5 May 2015*

Throughout the growing season AEGIC produces a range of products to assist grain growers, accumulators, marketers and end-users with their decision making. To stay informed mark the release dates of these products in your calendar with the help of this handy schedule.

<http://www.aegic.org.au/programs/yield-and-seasonal-forecasting.aspx>





# Upcoming Events Calendar

## June 2015

- 11-12** Upper North Sustainable Soils CAP Workshop, Carrieton. Kate Pearce, P (08) 8658 1086  
**12** UNFS Production Zoning Workshop; 9-12PM Joe and Jess Kochs' Farm, Booleroo Centre.  
**12** UNFS Production Zoning Workshop; 1.30-4.30 Rob and Michelle Dennis' Farm, Port Germein  
**19-21** Campground Host Training, Mt Remarkable National Park - Mambray Creek Campground. Donna Ferschl, Natural Resources Northern and Yorke - (08) 8666 2014 or M 0447 201 347  
**22** The business case for carbon farming: improving your farm's sustainability Workshop, Kadina [Kondinin Group](http://Kondinin Group) 1800 677 761 [www.carbonfarminginitiative.farmingahead.com.au](http://www.carbonfarminginitiative.farmingahead.com.au)  
**30** Nuffield Scholarship Applications close. [www.nuffield.com.au](http://www.nuffield.com.au)

## July 2015

- 8** UNFS Annual General Meeting  
**21** Hart Winter Walk [Sandy Kimber](http://Sandy Kimber) 0427 423 154  
**22** EPARF Member Day 2015: Innovation and Technology [Dot Brace](http://Dot Brace) 8680 5104  
**24** Mid North High Rainfall Group Winter Walk [Phil Holmes](http://Phil Holmes) 0428 587 862

## August 2015

- 6** UNFS Annual Field Day  
**13** GRDC Research Update, Kadina. ORM [www.orm.com.au](http://www.orm.com.au)

## September 2015

- 2** Minnipa Agricultural Centre Annual Field Day – Celebrating 100 Years Leala Hoffmann, 8680 5104  
**10** UNFS Eastern Spring Crop Walk. Date for Western Spring Crop walk TBA.  
**13-16** Australian Barley Technical Symposium, Manly [www.abtsbarley.info/](http://www.abtsbarley.info/)  
**15** Hart Field Day [Sandy Kimber](http://Sandy Kimber) 0427 423 154  
**29** Mid North High Rainfall Group Field Day [Phil Holmes](http://Phil Holmes) 0428 587 862  
**29/30/1** [Yorke Peninsula Field Days](http://Yorke Peninsula Field Days) - Paskeville

## October 2015

- 20** Hart Spring Twilight Walk [Sandy Kimber](http://Sandy Kimber) 0427 423 154

**Disclaimer:** The UNFS Update has been prepared in good faith on the basis of information available at the date of publication without any independent verification. Upper North Farming Systems (UNFS) does not guarantee or warrant the accuracy, reliability, completeness or currency of the information in this publication nor its usefulness in achieving any purpose. Readers are responsible for assessing the relevance and accuracy of the content of this publication. UNFS will not be liable for any loss, damage, cost or expense incurred or arising by reason of any person using or relying on information in this publication.



# Upper North Farming Systems Contact List

Joe Koch **Chairman**

(Booleroo Centre)

kochy260@hotmail.com

0428 672 161

Barry Mudge **Vice Chairman**

(Nelshaby)

theoaks5@bigpond.com

0417 826 790

Matt McCallum **Trials & Extension Chair**

(Booleroo/Willowie)

matthewmcag@bigpond.com

0438 895 167

Jim Kuerschner **Finance Officer**

(Orroroo/Black Rock)

jimkuerschner@bigpond.com

0427 516 038

Don Bottral **Sponsorship Officer**

(Appila)

donbot@active8.net.au

0427 635 002

Kym Fromm **Public Officer**

(Orroroo)

fromms@bigpond.com

0409 495 783

Ian Ellery **Equipment Officer**

(Morchard)

elleryprops@hotmail.com

0400 272 206

Tony Jarvis **Field Day Coordinator**

(Booleroo/Pekina)

jarvjane@active8.net.au

0427 586 035

Paul Rodgers (Quorn)

prodge81@gmail.com

0429 486 434

Ben Carn (Quorn)

carnomi@bigpond.com

0428 486 438

Matt Foulis (Willowie/Wilmington)

matt@northernag.com.au

0428 515 489

Todd Orrock (Booleroo/Murraytown)

tango001@bigpond.com

0428 672 223

Patrick Redden (Clare/Jamestown)

PRedden@ruraldirections.com

0400036568

## Contact Us

Email us at:  
unfs@outlook.com

**Upper North Farming Systems**

**PO Box 323**

**Jamestown, SA, 5491**

Visit us on the web at:  
[www.facebook.com/  
pages/Upper-North-  
Farming-  
Sys-  
tems/342964929066490](http://www.facebook.com/pages/Upper-North-Farming-Sys-tems/342964929066490)

**Project Manager and Executive Officer**

Ruth Sommerville

Rufous and Co

PO Box 16, Spalding 5454

rufousandco@yahoo.com.au

M: 0401 042 223

**Treasurer**

Samantha Quinn

PO Box 57, Hallett 5419

coolangatta25@bigpond.com

M: 0417 868 728

**Project Delivery Partners**

**Rural Solutions SA**

PO Box 223, Jamestown 5491

P: 08 8664 1408 F: 08 8664 1405

Michael.Wurst@sa.gov.au

Mary-Anne.Young@sa.gov.au

**Fenceline Consulting**

Peter Baker

0408272282

peter@fencelineconsulting.com.au