

# UNFS UPDATE



Upper North Farming Systems Newsletter

September 2014

## Frost Information Session Held 18th August at Morchard

Matt Foulis

Unfortunately due to receiving a week of freezing temperatures ( $-4^{\circ}\text{C}$  or worse) and reports of many local crops receiving severe frost damage, an urgent information session was arranged. Around 70 local growers and agronomists met at the Morchard Complex to address the issue of frost damage in crops in the Upper North. The day involved a PowerPoint presentation displaying images of locally found damage and the large variation in growth stage of crops affected. Clare Consultant, Mick Faulkner (Agrilink), was invited to attend and gave an extremely informative presentation to the group on the science behind stem frost and cereal phenology.

Growers had many questions answered by Mick in what was a well worthwhile session. The group was also addressed by Pat Guerin (Balco) on potential for some of these frosted crops to be turned into Export Hay, and potential markets for this. Growers then headed to Amyton (North of Willowie) to look a couple of severely frost affected wheat crops. The first was a crop at GS32, which upon arrival had much of the group thinking we had stopped at the wrong paddock due to its very early growth stage. Damage in this crop was estimated between 40-60% tiller loss, and growers, with the help from several agronomists had the chance to dissect plants and identify frosted tillers. This was a huge eye-opener for all involved. The second crop the group visited was a crop at GS51 (early heading), which was being considered for Hay Cutting due to the severity of damage (roughly 90%) and the large amount of biomass the paddock had produced.

Discussion amongst growers, agronomists, hay contractors and exporters came to the general conclusion that hay could produce some valuable income from the crop, even though exposed to the large risk of weather damage (being so early in the season). Even though being a very downbeat topic, the day ended up being quite successful in educating growers on stem frost and flowering frost, and identifying these issues in a crop.



Healthy

Frosted



Frost damage examined at the Frost Workshop in August  
Photos; Matt Foulis

# GRDC TV - HARVEST HEIGHT

Source: [www.youtube.com](http://www.youtube.com)

Starting to think about harvest? What effect will the height you cut your crops have on header efficiency, crop yield and next years germination? These are all things that you can control by the height at which you harvest your crop and the resulting effect on the crop biomass residues.

Check out the GRDC Stubble Initiative Trial initial results from Southern NSW. Search YouTube for "GCTV15 - Stubble Height".

www.youtube.com/watch?v=XDTsbGcZpM&list=UUis\_Qcm4MF8afoYoc3i59A&index=5

YouTube AU

### Headers are expensive mulchers

Downside trial: John Deere 9770 STS with PowerCast tailboard

Cut height	Efficiency (ha/h)	Speed (km/h)	Fuel (L/ha)	Yield (t/ha)
Short (15cm)	5.7	6.2	9.6	2.05
Tall (60cm)	9.5	10.5	5.4	2.19

Additional cost of harvesting short ~\$64/ha

GCTV15: Stubble Height Pt.1

Uploads from theGRDC

- GCTV15: Stubble Height Pt.1 by theGRDC
- Growing long-season canola with Bruce McLean by theGRDC
- Variable Rate Technology in the spotlight at Dowerin by theGRDC
- Over The Fence: Canola nutrition research providing huge insight for Trangie farmer by theGRDC
- Over the Fence: Soil health key to capturing moisture for profit at Moonie by theGRDC
- Narrow Windrow Burning at Kukerin by theGRDC
- Regional crop networks informing new grains research by theGRDC

GCTV15: Stubble Height Pt.2 by theGRDC

## In This Issue

- UNFS Spring Crop Walk
- Canola Insecticide Use and its implications for Honeybees Factsheets
- GRDC Groundcover TV - Stubble Height Episodes
- Frost Information Session
- Laura Ag Bureau Field Walk
- AEGIC Wheat Yield Predictions
- Landcare Grants
- Young Science Awards
- Gross Margin Template
- International Rural Womens Conference
- Chemical Update
- Quad Bike Study
- CBH Football Club Sponsorship
- Agronomic Update



Jess Koch, Pringles Crouch Ag+, discussing the use of the John Deere Moisture Probe in the Variable Rate N Trial at the Spring Crop walk north of Booleroo Centre. Photo; Ruth Sommerville



# Laura Ag Bureau

Part of the farming community since 1914

## Laura Ag Bureau, 2014 Field Walk

Meet at Lachy Smart's Place, Avonmore Road, approx 4km North of Wirrabarra

1 pm, Monday, September 29, All Welcome

- Lachie Smart, my grazing system, post the Bangor Fire
- Daniel Schuppan, Rotation Grazing for production and pasture management
- Anne Brown, Grazing for native species
- Electric Fencing demonstration
- RAPPA electric fencing system, demo
- Livestock water system, demo, Michael Richards
- Managing new Weeds & Roadside Weeds
- Sulla Pasture, Crop Varieties, Moisture Probes
- Drone Demonstration & experiences, Joe Koch
- Approx 3-30pm Visit Ashley Harvey's farm; cell grazing & pasture management
- Wirrabarra Hotel
- Harvest Deliveries, Silo Committee Report, Nigel Clogg
- Frost identification, Matt McCallum
- Evening Meal at Hotel

All Welcome, Contact for more info; Tim Zwar 0428 684 066



Natural Resources  
Northern and Yorke



## Agronomic Update

Phil Green, Northern Ag

### Heliothis Grubs

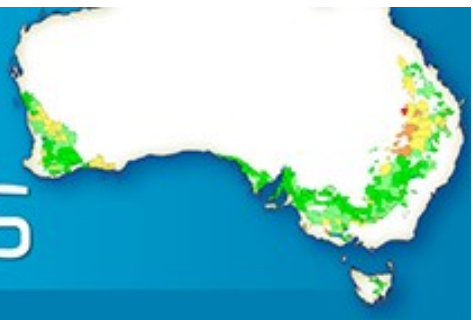
Very small grubs (up to 5mm) were found late last week in numbers that require spraying. Time to get out and check your crops and develop a plan to control them if they reach economic thresholds.

### Stripe Rust

Stripe rust was detected at low levels a few weeks ago at several locations around the state, but none locally. Due to the dry conditions the disease has only been developing very slowly, however, last Friday the rust was found in a number of paddocks around Melrose, and with rain forecast could be a threat.

Mace at the mid heading stage can suffer up to 40% yield loss, at awn peep 50% and booting 65% if unprotected. If you have Mace that is prior to mid heading and has not had a fungicide applied, or it was a long time ago, then you need to consider spraying. Scout is also at risk, at the same timing as above the yield loss could be 10%, 20% and 40%. Gladius could be 0%, 3% and 15%. Axe is resistant and for other varieties contact us for more information.

# Predicted shire wheat yield MAPS

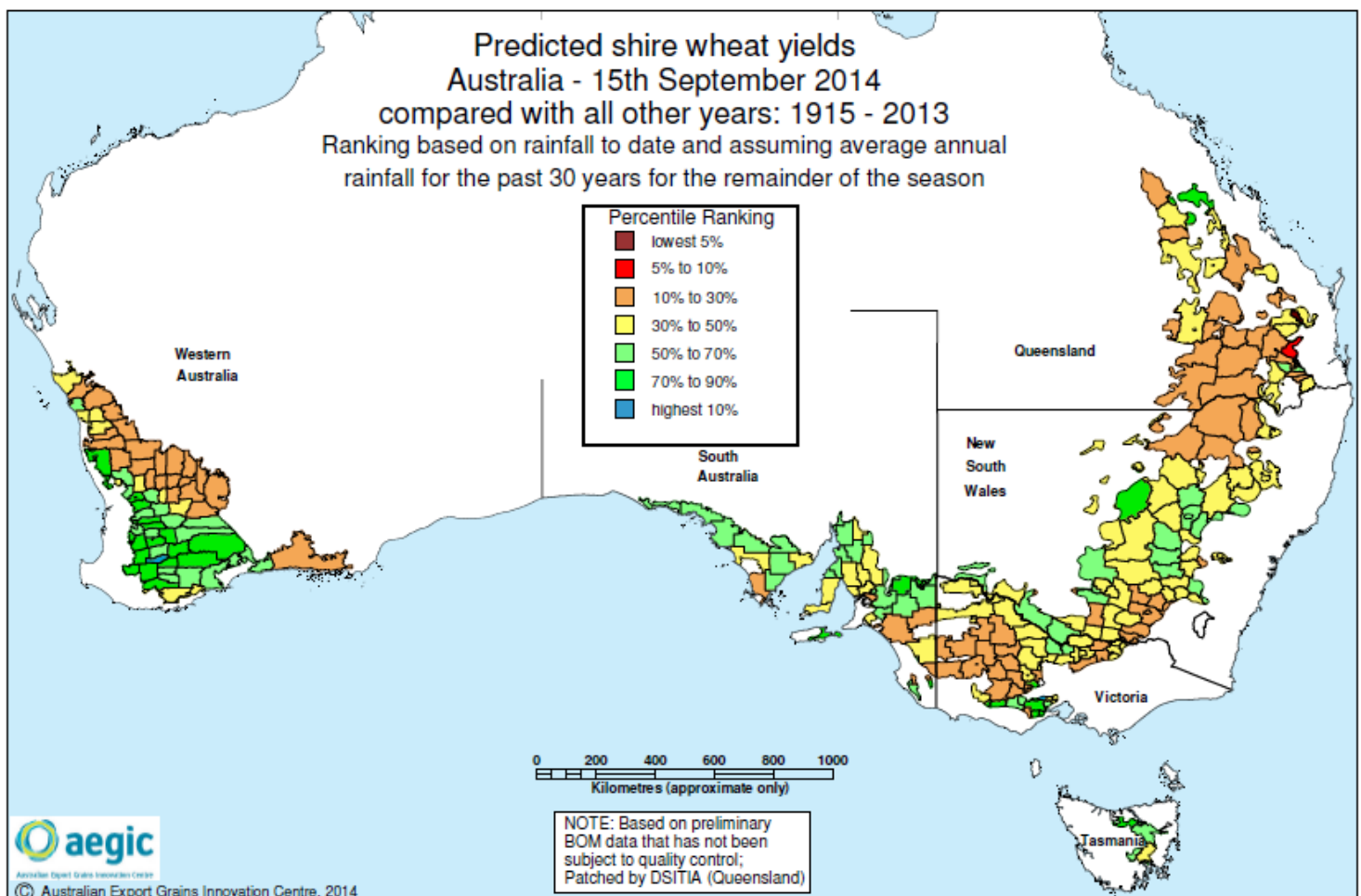


Below average rainfall across southern Australia in August and early September has caused crop yield rankings to fall with below average yields now being recorded over much of the Australian wheat belt.



Exceptions to this are the southern half of the Western Australian wheat belt, northern and central areas of South Australia and parts of southern New South Wales.

Much of these better yielding areas had above average soil moisture in the ground at the end of seeding.





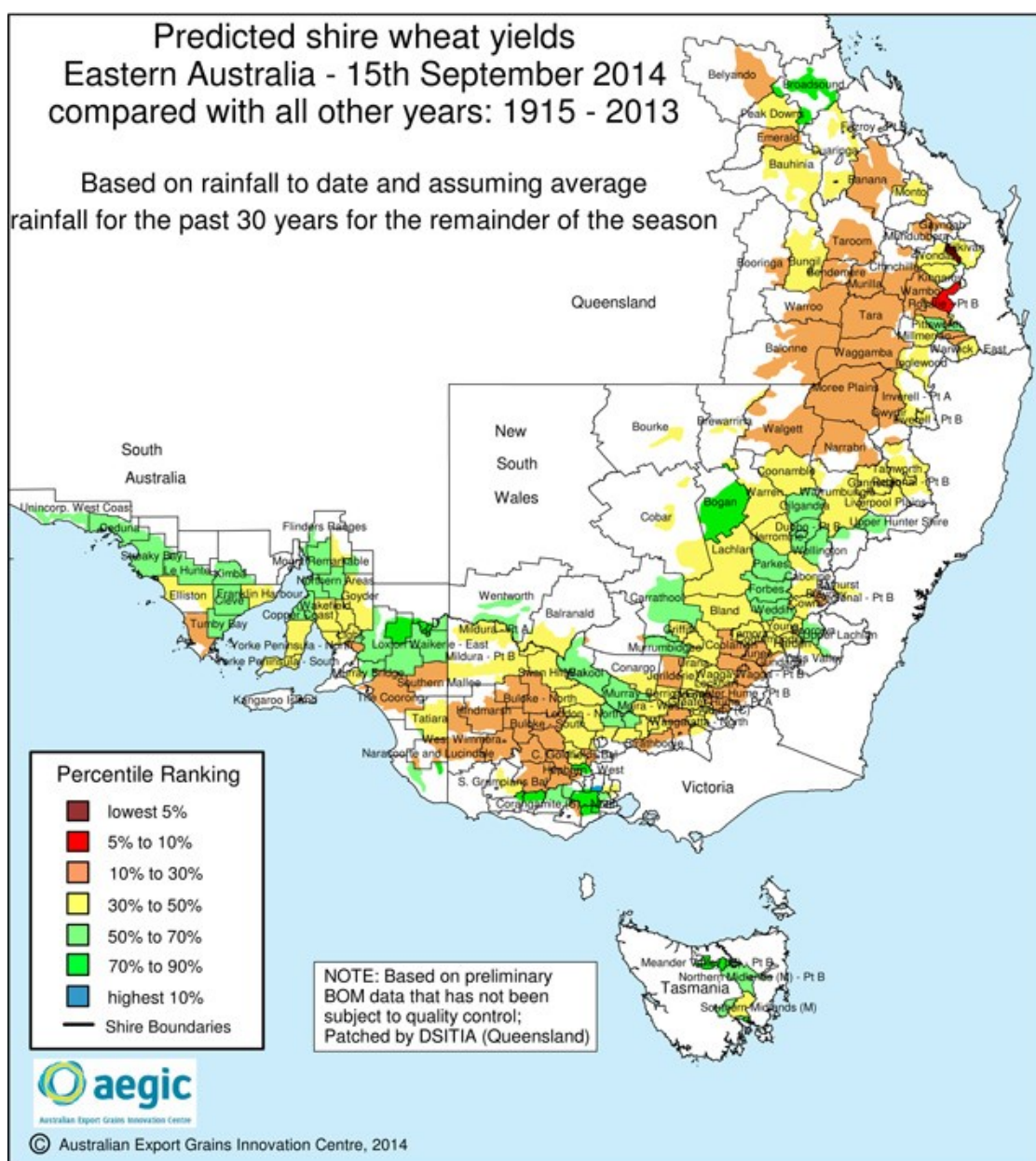
Crop yield rankings are expected to fall further in eastern Australia as the effects of a slow developing El Niño and reduced sea-surface temperature gradient to the north-west of Australia take hold.

This map does not take into account the severe frosts that have affected inland areas of New South Wales, Victoria and South Australia.

Crop yield potentials are virtually set now in Queensland and northern Western Australia, whereas rankings can still change in more southern areas which have a longer growing season.

For More Info: [http://www.aegic.org.au/programs/yield-and-seasonal-forecasting.aspx?\\_cldee=dW5mc0BvdXRsb29rLmNvbQ%3d%3d](http://www.aegic.org.au/programs/yield-and-seasonal-forecasting.aspx?_cldee=dW5mc0BvdXRsb29rLmNvbQ%3d%3d)

**All contents copyright © AEGIC. All rights reserved.**



---

# 25th Anniversary Landcare Grants 2014-2015

## Now Open

The 25<sup>th</sup> Anniversary Landcare Grants 2014-15 are part of the national stream of the National Landcare Programme and are one way of marking the 25<sup>th</sup> anniversary of Landcare as a national movement.

A total of up to \$5 million (GST exclusive) is available in 2014-15 through the 25<sup>th</sup> Anniversary Landcare Grants 2014-15.

The funding comprises up to \$2.5 million (GST exclusive) for environment focused projects and up to \$2.5 million (GST exclusive) for agriculture focused projects.

The 25<sup>th</sup> Anniversary Landcare Grants 2014-15 will harness the expertise and enthusiasm of the natural resource management community, including landcare, Indigenous people, farmers, fishers and other land and sea managers.

Grants of between \$5000 and \$20 000 (GST exclusive) will assist community groups and individuals to undertake projects to conserve and protect their local environment and / or to manage the natural resource base, contributing to outcomes in the national interest.

This approach delivers on the natural resource management community's desire for a greater focus on local action and priorities.

Applications for the 25<sup>th</sup> Anniversary Landcare Grants 2014-15 are **now open**.

Funding round closes: **2.00pm (AEDT) 20 October 2014**

Further information can be found here: <http://www.nrm.gov.au/national/25th-anniversary-landcare-grants>



## Honey Bee Awareness Fact Sheets

Biosecurity SA has produced two fact sheets on the effect of Insecticides use in Canola on Honey Bees. One is aimed at increasing grower awareness, whilst the second is aimed at Apiarists. If you would like a copy of either of these fact sheets please contact us.



Australian Government  
Department of Agriculture

## 2015 Science Awards

Grants to realise big ideas  
from young rural innovators

Grant applications are now open for the 2015 Science and Innovation Awards for Young People in Agriculture, Fisheries and Forestry. If you're 18-35, this is your chance to apply for up to \$22,000 to fund your innovative research project that will benefit Australia's primary industries.

More information and application forms at [daff.gov.au/scienceawards](http://daff.gov.au/scienceawards). Applications close 5pm (AEDT) Friday 03 October 2014.

Contact  
Email [scienceawards@agriculture.gov.au](mailto:scienceawards@agriculture.gov.au)



## Upcoming Events Calendar

### September

**29** - Laura Ag Bureau Field Walk - 1PM, Wirrabarra. Tim Zwar 0428 684 066

### October

**20** - Landcare Grants Applications Close

**21** - Hart Spring Twilight Walk Sandy Kimber **0427 423 154**

### November

**3/4** - Empowering Women, International Rural Womens Conference - Adelaide

### February 2015

**11** GRDC Grains Research Update for Advisers, Adelaide



Apologies for the poor quality image. The image provided for this advertisement would not enable editing. If you would like the original sent to you please contact Ruth Sommerville.

# Empowering Women

International Rural Women's Conference  
Adelaide Event and Exhibition Centre Adelaide Show Grounds  
3, 4 November 2014

Listen Learn Engage



## Empowering, Educational, Inspiring Themes



- Food Security
- Health and Well being of Rural Communities
- Women Influencing Agribusiness
- Technology Inspiring Innovative Change

### Sponsored By



Government of South Australia  
Primary Industries and Regions SA



Natural Resources  
Adelaide and Mt Lofty Ranges

Natural Resources  
SA Murray Darling Basin

Submissions for Papers Open

Registrations Open

[www.internationalruralwomensconference.com](http://www.internationalruralwomensconference.com)

Carol: [caroljschofield@bigpond.com](mailto:caroljschofield@bigpond.com) 0885529412 ; 0428364919

**GRDC** Grains Research & Development Corporation  
Your GRDC working with you



## UNFS 2014 Spring Crop Walk

Left: Matt Foulis, Northern Ag and Joe Koch, UNFS outlining the variable rate N trial as part of the GRDC Stubble Initiative. Opposite Page - Top Left: The group learns about Crown Rot at the Crown Rot trial site north of Booleroo Centre. Top Right : Marg Evans, SARDI, discussing Crown Rot and other cereal root diseases and their management. Bottom Left - Therese McBeath, CSIRO, discussing Making more from Crop Nutrition. Bottom Right - Rob Wheeler, SARDI, running through the NVT Trial site north of Booleroo Centre. Photos: Ruth Sommerville

**Disclaimer:** The UNFS Update has been prepared in good faith on the basis of information available at the date of publication without any independent verification. Upper North Farming Systems (UNFS) does not guarantee or warrant the accuracy, reliability, completeness or currency of the information in this publication nor its usefulness in achieving any purpose. Readers are responsible for assessing the relevance and accuracy of the content of this publication. UNFS will not be liable for any loss, damage, cost or expense incurred or arising by reason of any person using or relying on information in this publication.



## UNFS SPRING CROP WALK



### A Gross Margin Template for Crop and Livestock Enterprises in South Australia

- Compare the gross margin profitability of enterprises, paddocks and rotations
- Assist with decision making

Compare the sensitivity of profit of enterprises to a change in production, costs and price.

Broadacre farmers in South Australia continue to operate in a challenging environment. The 2013 season was generally above average across the state, although the exceptional potential which existed in early spring was often not realised due to some less than favourable weather events which occurred prior to and during harvest.

The Farm Gross Margin & Enterprise Planning Guide 2014 provides a format and general estimates for calculating crop and livestock gross margin profit and enterprise profitability for broadacre enterprises across Southern Australia. It provides a base to easily calculate gross margins and to use for cash flow planning.



**ORDER YOUR COPY NOW.**

**ONLY A LIMITED NUMBER OF COPIES AVAILABLE.**

To order your copy, use order code GRDC966:

**Price:** FREE + P&H charge of \$10 for all orders received  
**Email:** [subscribers@grdc.com.au](mailto:subscribers@grdc.com.au)  
**Free phone:** 1800 11 00 44  
**Free fax:** 1800 00 99 88  
**Post:** Ground Cover Direct  
 PO Box 7456  
 CANBERRA MC ACT 2610

## HVE Banned

The APVMA ban on the use of High Volatile Esters (HVE) came into effect on 1 September 2014. Producers need to be aware that they can no longer use these products at any time in SA. All remaining chemical should be disposed of via Drum Muster, ChemClear or Zero Waste [Disposal of chemicals](#). A list of suspended HVE 2,4-D products can be found on the APVMA web site [APVMA HVE list](#).

## Quad Bike Study

Quad bikes play an important role in agriculture but in recent years the number of deaths and injuries associated with their use has increased. University of Adelaide is conducting a research project into the use of quad bikes in South Australia, and would really like to talk to you about your experiences riding a quad bike as part of the study.



This will involve a short interview at a place that is convenient for you. They are happy to come to your workplace/farm/home.

For more details, please download the information sheet at <http://casr.adelaide.edu.au>

If you would like to participate in this important study or would like further details, please call the Centre for Automotive Safety Research at the University of Adelaide on 1800 043678 (toll free) or email: [casr@adelaide.edu.au](mailto:casr@adelaide.edu.au)

## CBH Football Club Grass Roots Sponsorship Program

CBH are looking to sponsor South Australia's country football clubs at a grass roots level, as many of the SA football community are customers of CBH.

CBH is offering sponsorship in the form Bronze (\$300), Silver (\$600), Gold (\$1500) and Platinum levels (\$1500+) levels.

CBH is also offering a \$0.20 rebate for every tonne of grain sold to CBH by members of sponsored football clubs. This will be paid as a bulk payment at the end of harvest to the sponsored football club.

This form of sponsorship is not a Corporate sponsorship, but is designed to return money back to country sporting groups at a community level. As previously stated, many of the growers are customers of CBH and have requested this form of sponsorship.

For more information or to get an application form please contact **GERALD CASH**, Regional Manager - Mid North, Yorke Peninsula and SA Mallee, PO Box 78 Goodwood SA 5034, **M** 0417 811 960, **P** 03 9926 3833, **F** 03 9682 0938, **E** [Gerald.Cash@cbh.com.au](mailto:Gerald.Cash@cbh.com.au)

CBH is a proud Bronze Level Sponsor of the Upper North Farming Systems Group.



## Pro-Rata Sponsorship Program



# Upper North Farming Systems Contact List

Joe Koch **Chairman**

(Booleroo Centre)

kochy260@hotmail.com

0428 672 161

Barry Mudge **Vice Chairman**

(Nelshaby) theoaks5@bigpond.com

0417 826 790

Matt McCallum **Trials & Extension Chair**

(Booleroo/Willowie)

matthewmcag@bigpond.com

0438 895 167

Jim Kuerschner **Finance Officer**

(Orroroo/Black Rock)

jimkuerschner@bigpond.com

0427 516 038

Don Bottral **Sponsorship Officer**

(Appila) donbot@active8.net.au

0427 635 002

Kym Fromm **Public Officer**

(Orroroo) fromms@bigpond.com

0409 495 783

Ian Ellery **Equipment Officer**

(Morchard) elleryprops@hotmail.com

0400 272 206

Tony Jarvis **Field Day Coordinator**

(Booleroo/Pekina) jarvjane@active8.net.au

0427 586 035

Paul Rodgers (Quorn)

prodge81@gmail.com

0429 486 434

Ben Carn (Quorn)

carnomi@bigpond.com

0428 486 438

Matt Foulis (Willowie/Wilmington)

matt@northernag.com.au

0428 515 489

Todd Orrock (Booleroo/Murraytown)

tango001@bigpond.com

0428 672 223

Patrick Redden (Clare/Jamestown)

PRedden@ruraldirections.com

0400036568

## Contact Us

Email us at:  
unfs@outlook.com

**Upper North Farming Systems**

**PO Box 323**

**Jamestown, SA, 5491**

Visit us on the web at:

[www.facebook.com/  
pages/Upper-North-  
Farming-  
Sys-  
tems/342964929066490](http://www.facebook.com/pages/Upper-North-Farming-Sys-tems/342964929066490)

### Project Manager and Executive Officer

Ruth Sommerville

Rufous and Co

PO Box 16, Spalding 5454

rufousandco@yahoo.com.au

M: 0401 042 223

### Treasurer

Samantha Quinn

PO Box 57, Hallett 5419

coolangatta25@bigpond.com

M: 0417 868 728

### Project Delivery Partners

#### Rural Solutions SA

PO Box 223, Jamestown 5491

P: 08 8664 1408 F: 08 8664 1405

Michael.Wurst@sa.gov.au

Mary-Anne.Young@sa.gov.au

#### Fenceline Consulting

Peter Baker

0408272282

peter@fencelineconsulting.com.au