

eID tag tips

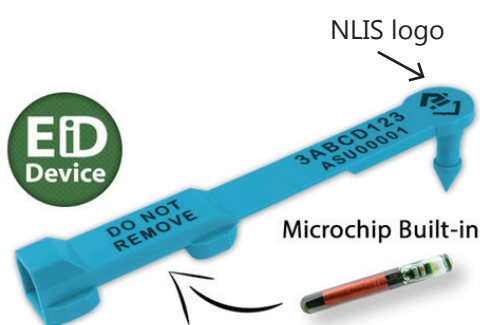


Useful tips for SA producers about electronic identification (eID) devices for sheep and goats

1

eID tags must be approved by the National Livestock Identification System (NLIS)

- Animals that are identified with NLIS-accredited eID can be individually traced through the NLIS database
- Look for the **NLIS logo** printed on the tag



Scan the QR code for the list of NLIS devices

- NLIS eID tags have a non-visible 16-digit radio frequency identification (RFID) number that can be scanned with a handheld wand or panel reader

2

How to tell the difference between eID tags and visual tags

- Approved eID tags have an NLIS number **printed on the tag** showing:

NLISID	Property Identification Code						Device Type			Device Serial Number					
	S	A	1	2	3	4	5	6	L	S	U	3	0	0	1
									Manufacturer	Year					
Manufacturer Code (1 Letter) X = Allflex Australia M = Datamars R = Enduro L = Leader Products A = Shearwell									Device Type (1 Letter) S = Sheep (RFID breeder) T = Sheep (RFID post-breeder) K = Goat (RFID breeder) L = Goat (RFID post-breeder)		Year (1 Letter) Q = 2019 R = 2020 S = 2021 T = 2022 U = 2023 V = 2024 W = 2025 X = 2026 Y = 2027 Z = 2028				

3

eID tags are species specific

- eID tags can only be used on the type of animal they are purchased for (sheep or goats)
- The species is recorded against each identification number on the NLIS database (*see the device type list above*)



Government of South Australia
Department of Primary Industries
and Regions

The NLIS year of birth colour system is voluntary in South Australia

- **Breeder tags** are used to permanently identify animals before they leave their property of birth - the default colour is yellow

COLOUR	YEAR	YEAR	PINK post-breeder devices must be pink
Yellow	2021	2029	
Red	2022	2030	
Sky blue	2023	2031	
Black	2024	2032	
White	2025	2033	
Orange	2026	2034	
Light green	2027	2035	
Purple	2028	2036	



- **Post breeder eID tags** are used to permanently identify animals introduced onto a property that have not been eID tagged or have lost their original tag - post-breeder tags are pink
- If you buy in sheep or goats, you will need a supply of pink post-breeder eID tags to use as replacements for missing tags



Animals must only be tagged with 1 eID tag

- Once an animal has been tagged with an **NLIS-accredited** eID, it must remain with the animal for life
- Non-accredited eID tags must be removed before leaving the property

eID tags don't store data - you need an NLIS account

- RFID and NLIS numbers are linked on the NLIS database - either number can be used to record a movement
- When you purchase eID tags they will be registered to your PIC on the NLIS database by the tag manufacturer
 - You do not need to scan or update the database when you apply tags to your animals



eID tags should be applied according to tag manufacturers instruction

- eID tags need to be attached with a compatible applicator (*Scan the QR code overleaf to see a list of eID tag applicators*)
- Correct tag placement is important for tag retention
- Visit the Sheep and Goat Traceability Task Force online library at **sheepproducers.com.au/national-traceability** for videos and instruction manuals under "**Applying NLIS devices**"
- For any issues with tag retention please contact your tag supplier. Complaints can be lodged with Integrity Systems Company (ISC)

For more information about eID for sheep and goats scan the QR code or visit **pir.sa.gov.au/eID**

